



# Diablo Valley College Educational Strategic Plan

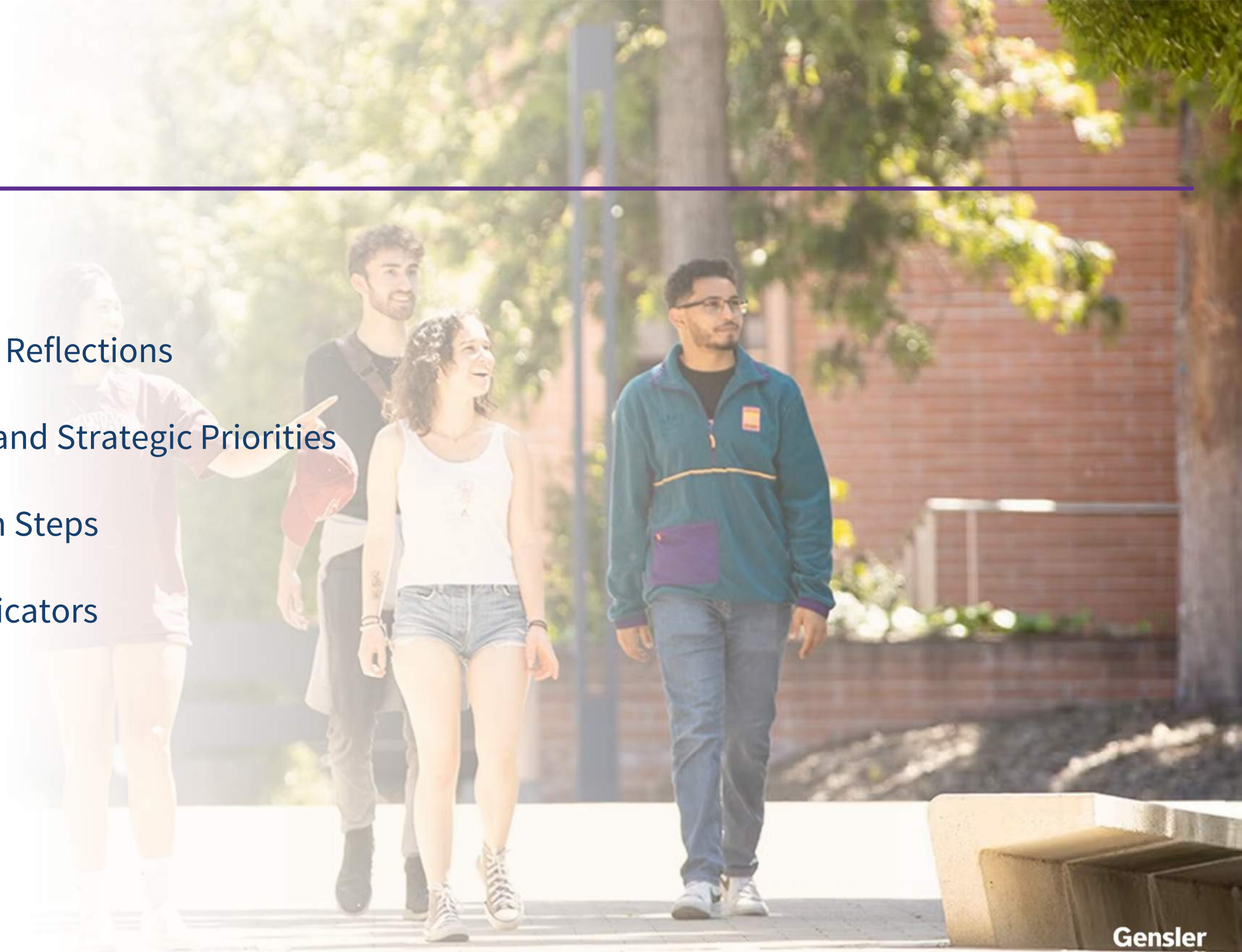
---

ESP Taskforce Workshop #5  
*March 13, 2026*

# AGENDA

---

- Process Overview
- All College Workshop Reflections
- Shared College Goal and Strategic Priorities
- Objectives and Action Steps
- Key Performance Indicators
- Next Steps



# Diablo Valley College Educational Strategic Plan

## PLANNING ROADMAP (TIMELINE)

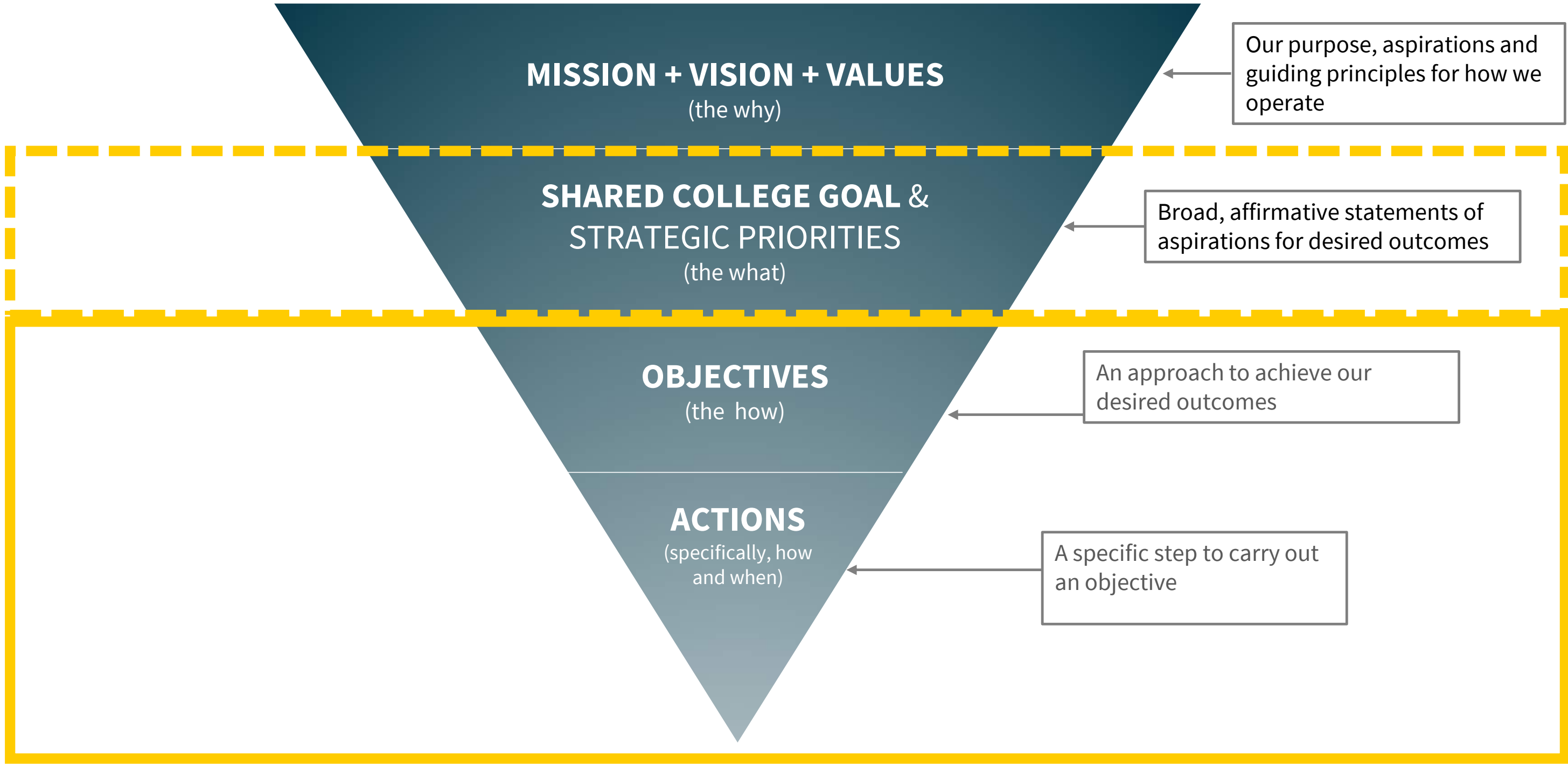
STEPS	2025				2026																																	
	OCT				NOV				DEC				JAN				FEB				MAR				APR				MAY				JUN					
	6	13	20	27	3	10	17	24	1	8	15	22	29	5	12	19	26	2	9	16	23	2	9	16	23	30	6	13	20	27	4	11	18	25	1	8	15	22
<b>1 Prepare</b>	█																																					
<b>2 Engage &amp; Analyze</b>			█	█	█	█	█	█	█																													
<b>3 Frame</b>							█	█	█	█	█	█	█	█	█	█	█																					
<b>4 Develop</b>															█	█	█	█	█	█	█	█																
<b>5 Share &amp; Approve</b>																																						

### KEY DATES

President's Cabinet																																						
College Council																																						
All College Workshops																																						
Taskforce Workshops																																						
Focus Groups																																						
Community Forum																																						
Board Meeting																																						

We are here

# Strategic Planning Overview



# All College Workshop Reflections



# Spring All College Workshop Reflections

GATHERING INPUT FROM MANY VOICES



**80+**  
Participants  
**Over 600 Action Step Suggestions**  
Consistent Feedback on Strategic Priorities

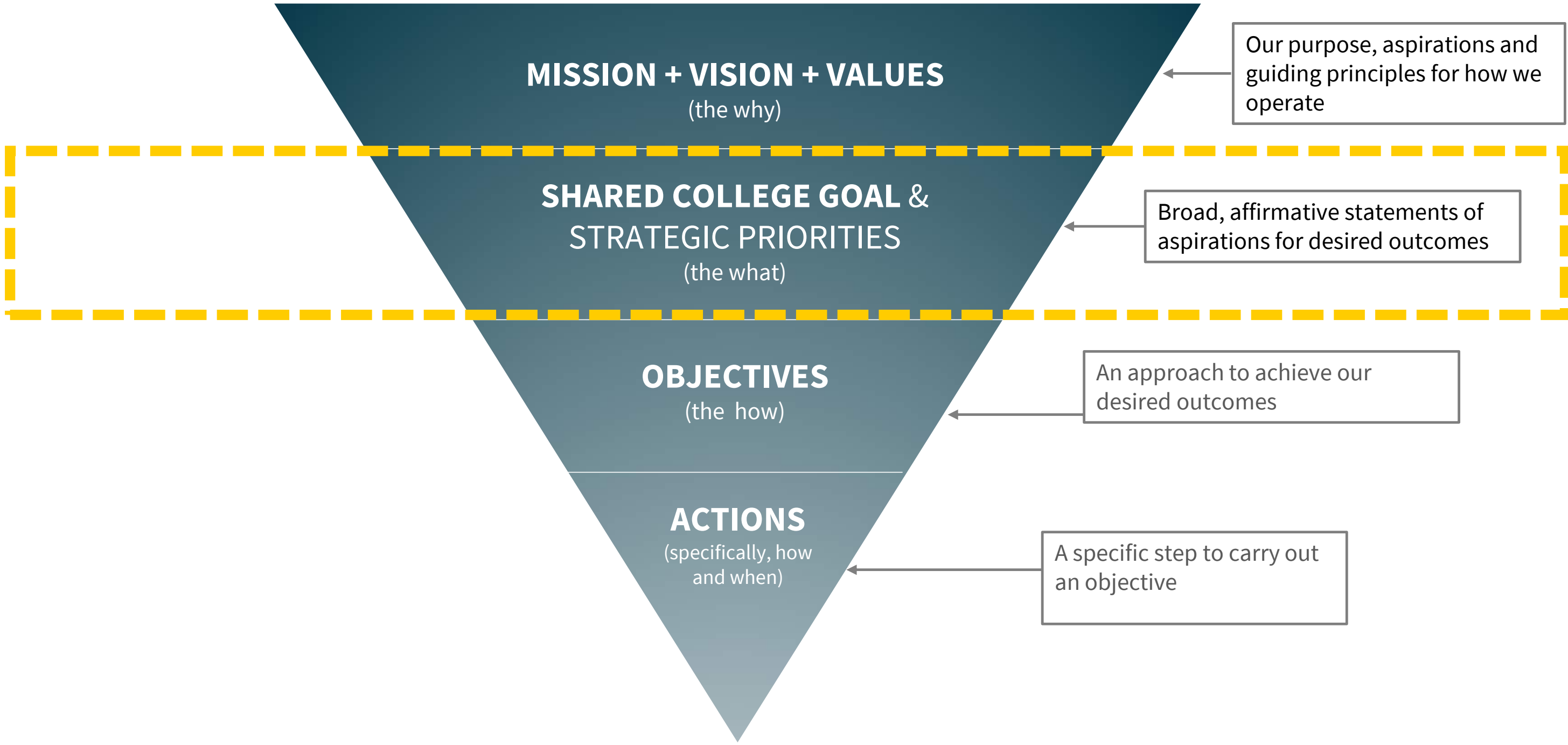
ESP All College meeting overall: It was FANTASTIC to talk with folks from all over the campus



A photograph of three young women in a classroom or office setting. One woman is seated in the foreground, looking towards the camera with a smile. Two other women are standing behind her, looking at a document she is holding. The woman on the right is leaning over the document, and both are smiling. The background shows a classroom with desks and a bulletin board.

## **Shared College Goal and Strategic Priorities**

# Strategic Planning Overview (Shared College Goals)



# Shared College Goal

ESP Taskforce Consensus 2/20/26

Overarching Shared College Goal:

***Advance equity in student goal completion  
by increasing holistic support  
and eliminating barriers to success.***

# Shared College Goal and “Strategic Priorities” (DRAFT v.2 includes Taskforce input from 2/20/26)

*Shared College Goal: Advance equity in student goal completion by increasing holistic support and eliminating barriers to success.*

## **Student Support and Belonging**

Increase student support and belonging by offering holistic support and fostering an inclusive and engaging learning environment.

## **Equity in Access and Success**

Advance equity in student access and success by embedding inclusive practices into instruction, student services, and decision-making, and by closing access and success gaps.

## **Guided Pathways and the Student Experience**

Eliminate barriers to success by strengthening guided pathways, delivering a cohesive student-centered experience, and enhancing cross-campus coordination.

## **Enrollment Growth and Flexible Learning**

Strengthen enrollment and student completion by clarifying collegewide priorities for enrollment growth, developing student-centered schedules, and offering flexible learning opportunities.

## **Academic Program Innovation and Community Partnerships**

Increase academic program innovation by evolving current programs, developing new workforce programs aligned with regional needs and emerging industries, and deepening educational, business, and community partnerships.

## **Institutional Effectiveness**

Enhance institutional effectiveness through data-informed planning, strategic resource alignment, program viability processes, and meaningful professional learning – while fostering a culture of innovation, collaboration, and continuous improvement.

# Shared College Goal and “Strategic Priorities” – Overall Feedback

***Shared College Goal: Advance equity in student goal completion by increasing holistic support and eliminating barriers to success.***

## Student Support and Belonging

Increase student support and belonging by offering holistic support and fostering an inclusive and engaging learning environment.

## Equity in Access and Success

Advance equity in student access and success by embedding inclusive practices into instruction, student services, and decision-making, and by closing access and success gaps.

## Guided Pathways and the Student Experience

Eliminate barriers to success by strengthening guided pathways, delivering a cohesive student-centered experience, and enhancing cross-campus coordination.

“Too much overlap”

“Too wordy”

## Enrollment Growth and Flexible Learning

Strengthen enrollment and student completion by clarifying collegewide priorities for enrollment growth, developing student-centered schedules, and offering flexible learning opportunities.

## Academic Program Innovation and Community Partnerships

Increase academic program innovation by evolving current programs, developing new workforce programs aligned with regional needs and emerging industries, and deepening educational, business, and community partnerships.

“Please simplify”

## Institutional Effectiveness

Enhance institutional effectiveness through data-informed planning, strategic resource alignment, program viability processes, and meaningful professional learning – while fostering a culture of innovation, collaboration, and continuous improvement.

# Shared College Goal and “Strategic Priorities” (Feedback Part 1)

**Shared College Goal: Advance equity in student goal completion by increasing holistic support and eliminating barriers to success.**

## Student Support and Belonging

Increase student support and belonging by offering holistic support and fostering an inclusive and engaging learning environment.

I like this one! It's understandable.

This one is more specific and less wordy than the others.

## Equity in Access and Success

Advance equity in student access and success by embedding inclusive practices into instructional practices, and

## Guided Pathways and the Student Experience

Eliminate barriers to success by strengthening guided pathways, delivering a cohesive student-centered experience, and enhancing cross-campus coordination.

## Enrollment Growth and Flexibility

Strengthen enrollment completion by clarifying priorities for enrollment, offering student-centered schedules, and offering flexible learning opportunities.

Need to have a way to measure progress if this is a goal.

## Academic Program Innovation and Community Partnerships

Increase academic program innovation by evolving current programs, developing new workforce programs aligned with regional needs and emerging industries, and deepening educational, business, and community partnerships.

## Institutional Effectiveness

Enhance institutional effectiveness through data-informed planning, strategic resource alignment, program viability processes, and meaningful professional learning – while fostering a culture of innovation, collaboration, and continuous improvement.

# Shared College Goal and “Strategic Priorities” (Feedback Part 2)

**Shared College Goal: Advance equity in student goal completion by increasing holistic support and eliminating barriers to success.**

## Student Support and Belonging

Increase student support and belonging by offering holistic support and fostering an inclusive and engaging learning environment.

## Equity in Access and Success

Advance equity in student access and success by embedding inclusive practices into instruction, student services, and decision-making, and by closing access and success gaps.

## Guided Pathways and the Student Experience

Eliminate barriers to success by strengthening guided pathways, delivering a cohesive student-centered experience, and enhancing cross-campus coordination.

## Enrollment Growth and Flexible Learning

Strengthen enrollment and student goal completion by clarifying college priorities for enrollment growth, developing student-centered schedules, and offering flexible learning opportunities.

Add “across all modalities”

## Academic Program Innovation and Community Partnerships

Increase academic program innovation by re-evaluating current programs, developing new workforce programs aligned with regional needs and emerging industries, and deepening educational, business, and community partnerships.

A bit redundant – advancing equity = closing gaps

## Operational Effectiveness

Advance operational effectiveness through strategic planning, strategic resource allocation, and viability processes, and foster a culture of innovation, collaboration, and continuous improvement.

# Shared College Goal and “Strategic Priorities” (Feedback Part 3)

**Shared College Goal: Advance equity in student goal completion by increasing holistic support and eliminating barriers to success.**

## Student Support and Belonging

Increase student support and belonging by offering holistic support and fostering an inclusive and engaging learning environment.

## Equity in Access and Success

Advance equity in student access and success by embedding inclusive practices into instruction, student services, and decision-making, and by closing access and success gaps.

## Guided Pathways and the Student Experience

Eliminate barriers to success by strengthening guided pathways, delivering a cohesive student-centered experience, and enhancing cross-campus coordination.

## Enrollment Growth and Flexible Learning

Strengthen enrollment and student completion by clarifying collegewide priorities for enrollment growth, developing student-centered schedules, and offering flexible learning opportunities.

## Academic Innovation and Workforce Alignment

Increase academic innovation by evolving current programs, developing new workforce programs aligned with regional needs and emerging industries, and deepening educational, business, and community partnerships.

## Institutional Effectiveness

Enhance institutional effectiveness through continuous improvement, innovation, and data-driven decision-making.

The Guided Pathways language hasn't been used actively for years.

Provide opportunities – clarify pathway and process instead of eliminate barriers

Clear navigation

# Shared College Goal and “Strategic Priorities” (Feedback Part 4)

**Shared College Goal: Advance equity in student goal completion by increasing holistic support and eliminating barriers to success.**

## Student Support and Belonging

Increase student support and belonging by offering holistic support and fostering an inclusive and engaging learning environment.

## Equity in Access and Success

Focuses on completely different areas – mostly emphasizes enrollment and retention only

## Guided Pathways and the Student Experience

Eliminate barriers to success by strengthening guided pathways, delivering a cohesive student-centered experience, and enhancing cross-campus coordination.

## Enrollment Growth and Flexible Learning

Strengthen enrollment and student completion by clarifying collegewide priorities for enrollment growth, developing student-centered schedules, and offering flexible learning opportunities.

## Academic Program Innovation and Community Partnerships

What is the definition of flexible learning?

## Institutional Effectiveness

Enhance institutional effectiveness through data-informed planning, strategic resource alignment, program viability processes, and meaningful professional learning – while fostering a culture of innovation, collaboration, and continuous improvement.

# Shared College Goal and “Strategic Priorities” (Feedback Part 5)

**Shared College Goal: Advance equity in student goal completion by increasing holistic support and eliminating barriers to success.**

## Student Support and Belonging

Increase student support and belonging by offering holistic support and fostering an inclusive and engaging learning environment.

These are two separate things: academic programming and community partnerships

## Equity in Access and Success

Advance success and equity in access and success by integrating best practices and decision-making into institutional success.

Community partnerships and careers should be a separate priority

## Guided Pathways and the Student Experience

Eliminate barriers to success by strengthening guided pathways, delivering a cohesive student-centered experience, and enhancing coordination.

Need integration with the student centered funding formula (SCFF)

## Enrollment Growth and Flexible Learning

Strengthen enrollment and student completion by clarifying collegewide priorities for enrollment growth, developing student-centered schedules, and offering flexible learning opportunities.

## Academic Program Innovation and Community Partnerships

Increase academic program innovation by evolving current programs, developing new workforce programs aligned with regional needs and emerging industries, and deepening educational, business, and community partnerships.

## Effectiveness

Enhance institutional effectiveness through data-informed planning, strategic resource alignment, program viability processes, and meaningful professional learning – while fostering a culture of innovation, collaboration, and continuous improvement.

# Shared College Goal and “Strategic Priorities” (Feedback Part 6)

**Shared College Goal: Advance equity in student goal completion by increasing holistic support and eliminating barriers to success.**

### Student Support and Belonging

Increase student support and belonging by offering holistic support and fostering an inclusive and engaging learning environment.

### Equity in Access and Success

Advance equity in student access and success by embedding inclusive practices into instructional design and decision-making processes to ensure success for all students.

### Guided Pathways and the Student Experience

Improve student access by providing clear pathways, delivering a personalized experience, and ensuring cross-departmental coordination.

### Enrollment Growth and Flexible Learning

Strengthen enrollment and student completion by clarifying collegewide priorities for enrollment growth, developing student-centered schedules, and offering flexible learning opportunities.

### Academic Program Innovation and Community Partnerships

Increase academic program innovation by evolving current programs, developing new workforce programs aligned with regional needs and emerging industries, and deepening educational, research, and community partnerships.

### Institutional Effectiveness

Enhance institutional effectiveness through data-informed planning, strategic resource alignment, program viability processes, and meaningful professional learning – while fostering a culture of innovation, collaboration, and continuous improvement.

Not all are interested in continuous improvement and collaboration

How do we foster community among staff, faculty, and managers?

Confusing

Community Building

Wordy and confusing

# Shared College Goal and “Strategic Priorities” (DRAFT v.3)

*Shared College Goal: Advance equity in student goal completion by increasing holistic support and eliminating barriers to success.*

**Strategic Enrollment  
and Scheduling**

**Student Support,  
Belonging, and Well-Being**

**Guided Pathways and  
the Student Experience**

**Equitable Learning and  
Student Success**

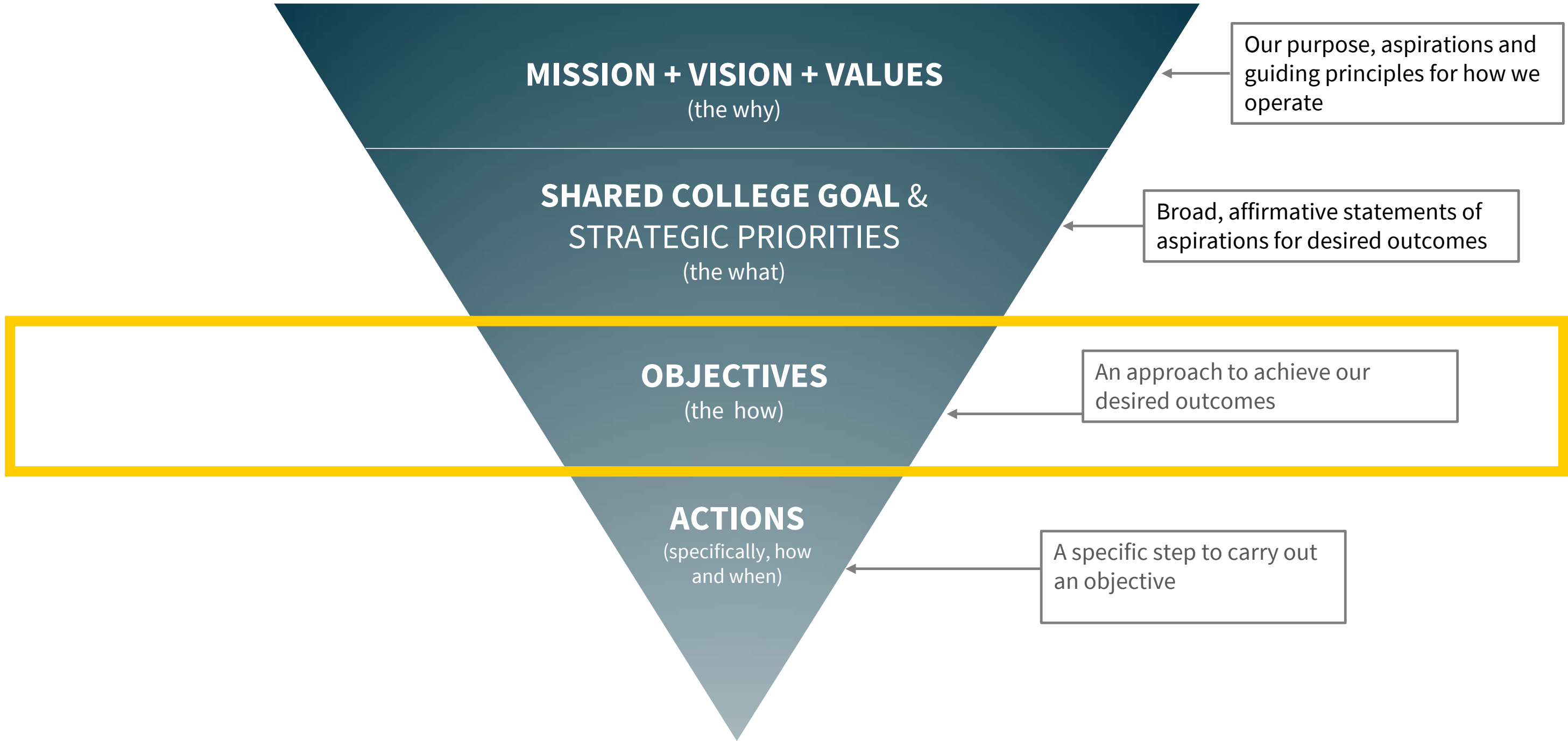
**Academic Innovation and  
Community Partnerships**

**Institutional Effectiveness  
and Organizational Culture**

# Objectives



# Strategic Planning Overview (Objectives)



# SAMPLE

*Shared College Goal: Advance equity in student goal completion by increasing holistic support and eliminating barriers to success.*

**EXAMPLE STRATEGIC PRIORITY:** Strengthen enrollment and completion by aligning course schedules, programs, and modalities with student and community needs.

**How can our department, program, or committee help achieve this priority?**

Over  
**600**  
Suggestions!

Offer more flexible class schedule options

Coordinate course schedule across campuses

Outreach to working adult population

Expand dual enrollment

Create a vision for distance education that aligns with student need.

# Strategic Priority #1 and Objectives

**Shared college goal:** Advance equity in student goal completion by increasing holistic support and eliminating barriers to success

**Strategic Enrollment and Scheduling**

**Objective 1.1: Implement a coordinated strategic enrollment management approach.**

**Objective 1.2: Develop student-centered schedules that support access and completion.**

**Objective 1.3: Strengthen pathways for adult learners, dual enrollment students, and nontraditional populations.**

# Strategic Priority #2 and Objectives

**Shared college goal:** Advance equity in student goal completion by increasing holistic support and eliminating barriers to success

**Student Support,  
Belonging, and  
Well-Being**

**Objective 2.1: Expand holistic student support services that address academic, financial, mental health, and basic needs barriers.**

**Objective 2.2: Foster a campus culture of belonging, connection, and engagement that supports student persistence and completion.**

**Objective 2.3: Improve coordination of student services to provide seamless support across the student journey.**

**Objective 2.4: Identify equity gaps and implement targeted strategies to improve outcomes for disproportionately impacted students.**

# Strategic Priority #3 and Objectives

**Shared college goal:** Advance equity in student goal completion by increasing holistic support and eliminating barriers to success

**Guided Pathways  
and  
the Student  
Experience**

**Objective 3.1: Clarify academic and career pathways.**

**Objective 3.2: Strengthen coordinated onboarding, advising, and student planning processes from entry to completion.**

**Objective 3.3: Increase student engagement with career exploration and academic planning resources.**

# Strategic Priority #4 and Objectives

**Shared college goal:** Advance equity in student goal completion by increasing holistic support and eliminating barriers to success

**Equitable Learning and Student Success**

**Objective 4.1: Strengthen inclusive teaching and learning.**

**Objective 4.2: Remove institutional barriers that limit access and completion.**

**Objective 4.3: Expand equitable access to programs, services, and learning opportunities.**

**Objective 4.4: Increase degree, certificate, and transfer completion while closing equity gaps in student success outcomes.**

# Strategic Priority #5 and Objectives

**Shared college goal:** Advance equity in student goal completion by increasing holistic support and eliminating barriers to success

**Academic  
Innovation and  
Community  
Partnerships**

**Objective 5.1: Develop and continuously improve academic and workforce-aligned programs that lead to strong transfer, career, and employment outcomes.**

**Objective 5.3: Strengthen partnerships with universities, K-12 districts, and community organizations.**

**Objective 5.2: Expand industry partnerships.**

# Strategic Priority #6 and Objectives

**Shared college goal:** Advance equity in student goal completion by increasing holistic support and eliminating barriers to success

**Institutional Effectiveness and Organizational Culture**

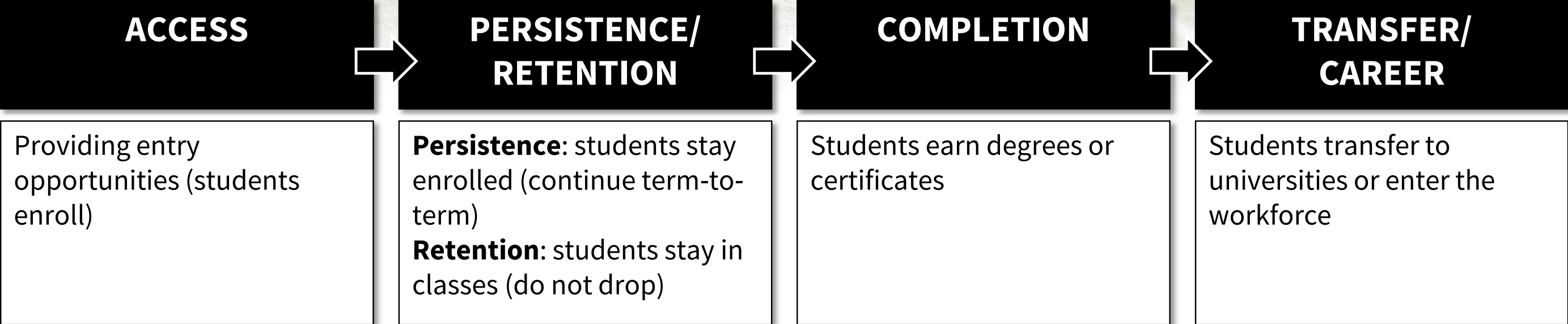
**Objective 6.1: Strengthen institutional data capacity and promote data-informed decision making.**

**Objective 6.2: Align planning, budgeting, and resource allocation with strategic priorities.**

**Objective 6.3: Strengthen professional learning to support leadership, innovation, and data-informed decision-making.**

**Objective 6.4: Foster a culture of collaboration and continuous improvement.**

# Student Success Journey



# Strategic Priority and Objectives Alignment Table

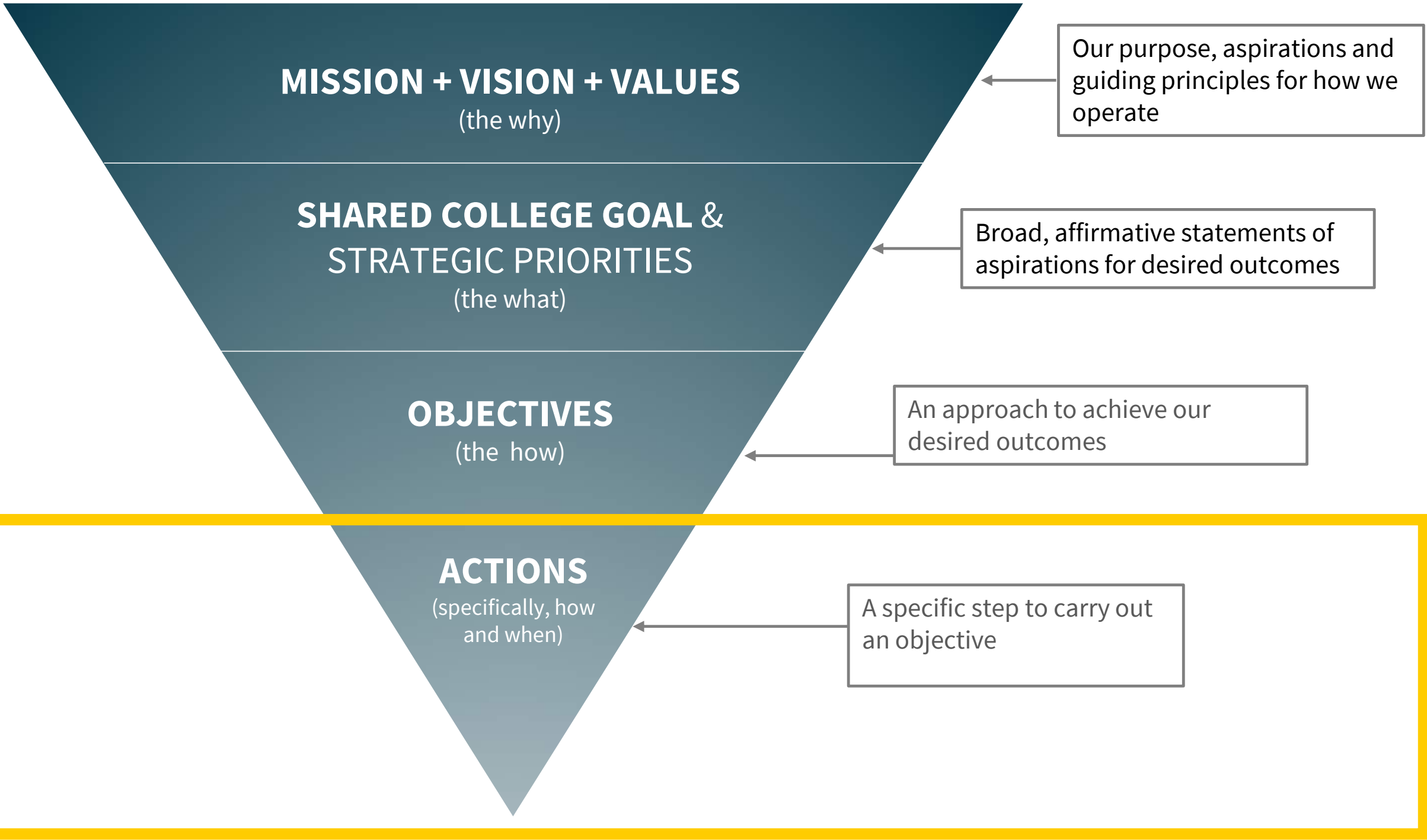
**Shared college goal:** Advance equity in student goal completion by increasing holistic support and eliminating barriers to success

STRATEGIC PRIORITY	KEY OBJECTIVES	STUDENT JOURNEY			
		ACCESS	PERSISTENCE /RETENTION	COMPLETION	TRANSFER/ CAREER
Strategic Enrollment and Scheduling	Strategic enrollment management; student-centered scheduling; pathways for adult learners and dual enrollment	✓	✓	✓	
Student Support , Belonging, and Well-Being	Holistic student support; campus belonging and engagement; coordinated student services		✓	✓	
Guided Pathways and the Student Experience	Program maps and pathways; coordinated onboarding and advising; career exploration		✓	✓	✓
Equitable Learning and Student Success	Inclusive teaching; removing institutional barriers; expanding equitable access; increasing completion and closing equity gaps	✓	✓	✓	
Academic Innovation and Community Partnerships	Workforce-aligned programs; industry, educational, and community partnerships	✓		✓	✓
Institutional Effectiveness and Organizational Culture	Data capacity and analytics; planning and resource alignment; professional learning; collaboration and innovation	✓	✓	✓	✓

# Action Steps



# Strategic Planning Overview (Actions)



# Strategic Priority #1 Objectives and Action Steps

**Shared college goal:** Advance equity in student goal completion by increasing holistic support and eliminating barriers to success

## Strategic Enrollment and Scheduling

### **Objective 1.1: Implement a coordinated strategic enrollment management approach.**

Action Steps:

- A. Strengthen strategic enrollment management practices.
- B. Align enrollment management priorities with student demand and the Student Centered Funding Formula.
- C. Balance access, retention, and fiscal sustainability.
- D. Expand early college pathways.
- E. Develop scheduling plans for low-enrollment, gatekeeping, and capstone courses.
- F. Expand targeted recruitment and retention strategies.

### **Objective 1.3: Strengthen pathways for adult learners, dual enrollment students, and nontraditional populations.**

Action Steps:

- A. Expand and strengthen dual enrollment pathways.
- B. Expand options for adult learners, including credit for prior learning, noncredit, short-term certificates, and workforce training programs.

### **Objective 1.2: Develop student-centered schedules that support access and completion.**

Action Steps:

- A. Improve coordination of schedules across campuses, modalities, and disciplines.
- B. Align course scheduling with student demand and program pathways.
- C. Offer flexible scheduling and expanded course modalities.
- D. Conduct course demand and room-usage scheduling analyses.
- E. Align time blocks across disciplines.

# Strategic Priority #2 Objectives and Action Steps

**Shared college goal:** Advance equity in student goal completion by increasing holistic support and eliminating barriers to success

## Student Support, Belonging, and Well-Being

**Objective 2.1: Expand holistic student support services that address academic, financial, mental health, and basic needs barriers.**

Action Steps:

- A. Expand access to support services in person and online.
- B. Increase student awareness of available support services.
- C. Expand support systems addressing basic needs, mental health, and technology access.
- D. Increase proactive outreach to students experiencing academic or financial challenges

**Objective 2.3: Improve coordination of student services to provide seamless support across the student journey.**

Action Steps:

- A. Align onboarding, advising, and student retention programs.
- B. Develop cross-department referral systems, including warm handoffs between services.
- C. Encourage collaboration between instructional faculty and counselors.

**Objective 2.2: Foster a campus culture of belonging, connection, and engagement that supports student persistence and completion.**

Action Steps:

- A. Expand opportunities for student connection and engagement on campus.
- B. Increase student activities, clubs, and campus events that build community.
- C. Improve communication about student engagement opportunities.
- D. Provide culturally responsive student engagement events and programs.

# Strategic Priority #3 Objectives and Action Steps

**Shared college goal:** Advance equity in student goal completion by increasing holistic support and eliminating barriers to success

## Guided Pathways and the Student Experience

### **Objective 3.1: Clarify academic and career pathways.**

Action Steps:

- A. Develop clear program maps for all degrees and certificates.
- B. Align pathways with transfer and workforce outcomes.
- C. Align course sequencing across programs to support timely completion.
- D. Strengthen coordinated advising and ensure program pathway information is clear and accessible on the college website.

### **Objective 3.2: Strengthen coordinated onboarding, advising, and student planning processes from entry to completion.**

Action Steps:

- A. Ensure website information is clear, easy to navigate, and up-to-date.
- B. Expand proactive advising, guidance, and counseling support.
- C. Improve communication between counseling, instruction, and enrollment services.

### **Objective 3.3: Increase student engagement with career exploration and academic planning resources.**

Action Steps:

- A. Expand career counseling, exploration, and job readiness workshops.
- B. Expand internship, experiential learning, and job shadowing opportunities.
- C. Partner with employers for career events and networking opportunities.

# Strategic Priority #4 Objectives and Action Steps

**Shared college goal:** Advance equity in student goal completion by increasing holistic support and eliminating barriers to success

## Equitable Learning and Student Success

### Objective 4.1: Strengthen inclusive teaching and learning.

#### Action Steps:

- A. Embed equity-minded and inclusive practices into teaching.
- B. Support faculty collaboration on innovative teaching practices.
- C. Expand universal design and accessibility practices in instruction.
- D. Employ teaching strategies that address diverse learning styles.
- E. Provide professional learning on culturally responsive pedagogy.

### Objective 4.3: Expand equitable access to programs, services, and learning opportunities.

#### Action Steps:

- A. Expand access for working adults and nontraditional students through flexible scheduling and targeted programming.
- B. Increase outreach to underserved communities and schools.
- C. Strengthen targeted support for disproportionately impacted students.

### Objective 4.2: Remove institutional barriers that limit access and completion.

#### Action Steps:

- A. Simplify administrative and student-facing processes.
- B. Enhance student and employee onboarding and orientation.
- C. Improve website navigation and information access.
- D. Improve accessibility of online materials and digital platforms.

### Objective 4.4: Increase degree, certificate, and transfer completion while closing equity gaps in student success outcomes.

#### Action Steps:

- A. Implement strategies to reduce retention and completion equity gaps.
- B. Embed equity and inclusion into daily practices.
- C. Establish shared definitions and clear collegewide equity goals.
- D. Expand access to dashboards and institutional data.

# Strategic Priority #5 Objectives and Action Steps

**Shared college goal:** Advance equity in student goal completion by increasing holistic support and eliminating barriers to success

## Academic Innovation and Community Partnerships

### **Objective 5.1: Develop and continuously improve academic and workforce-aligned programs that lead to strong transfer, career, and employment outcomes.**

Action Steps:

- A. Update current programs based on emerging industry needs.
- B. Develop new credit and non-credit programs in high-demand fields.
- C. Conduct regular program viability and improvement reviews.
- D. Use regional labor market data to inform program development and improvement.
- E. Use regular labor market data to inform program development and improvement.
- F. Streamline timelines for program updates and new certificate development.

### **Objective 5.3: Strengthen partnerships with universities, K-12 districts, and community organizations.**

Action Steps:

- A. Strengthen transfer pathway and articulation agreements with universities.
- B. Strengthen dual enrollment pathways with K-12 districts.
- C. Expand community engagement and outreach initiatives.
- D. Develop collaborative programs with community organizations.
- E. Create networking and engagement opportunities connecting students with employers and community partners.

### **Objective 5.2: Expand industry partnerships.**

Action Steps:

- A. Develop new employer partnerships for internships and apprenticeships.
- B. Expand work-based learning opportunities.
- C. Host industry panels and employer engagement events.
- D. Collaborate with industry partners on curriculum development.
- E. Increase employer participation in advisory committees.

# Strategic Priority #6 Objectives and Action Steps

**Shared college goal:** Advance equity in student goal completion by increasing holistic support and eliminating barriers to success

## Institutional Effectiveness and Organizational Culture

### Objective 6.1: Strengthen institutional data capacity and promote data-informed decision making.

#### Action Steps:

- A. Develop institutional data dashboards.
- B. Expand access to disaggregated student success data.
- C. Improve scheduling data and analytics tools.

### Objective 6.2: Align planning, budgeting, and resource allocation with strategic priorities.

#### Action Steps:

- A. Integrate strategic goals into budgeting processes.
- B. Align program review with resource allocation decisions.
- C. Improve transparency of resource allocation decisions.

### Objective 6.3: Strengthen professional learning to support leadership, innovation, and data-informed decision-making.

#### Action Steps:

- A. Align professional learning with strategic priorities and institutional goals.
- B. Provide training in data literacy, including interpreting and applying disaggregated student success data.
- C. Expand leadership development opportunities for faculty and classified professionals.

### Objective 6.4: Foster a culture of collaboration and continuous improvement.

#### Action Steps:

- A. Promote cross-department collaboration and knowledge sharing.
- B. Identify and share effective practices across departments and programs.
- C. Support innovation and continuous improvement initiatives.
- D. Recognize and celebrate innovation and improvement efforts across the college.

# Group Discussions





# Key Performance Indicators

# Key Performance Indicators (KPIs) – Part 1

ALIGNED WITH SHARED COLLEGE GOAL

## SHARED COLLEGE GOAL

*Advance equity in student goal completion by increasing holistic support and eliminating barriers to success*

## KEY PERFORMANCE INDICATORS

- Total degrees and certificates awarded annually
- Reduction in completion equity gap across student population
- First-year persistence rates
- Student utilization of support services
- Completion of transfer-level English and math in the first year

# Key Performance Indicators (KPIs) – Part 2

ALIGNED WITH THE STUDENT JOURNEY

## SHARED COLLEGE GOAL

*Advance equity in student goal completion by increasing holistic support and eliminating barriers to success*

## KEY PERFORMANCE INDICATORS

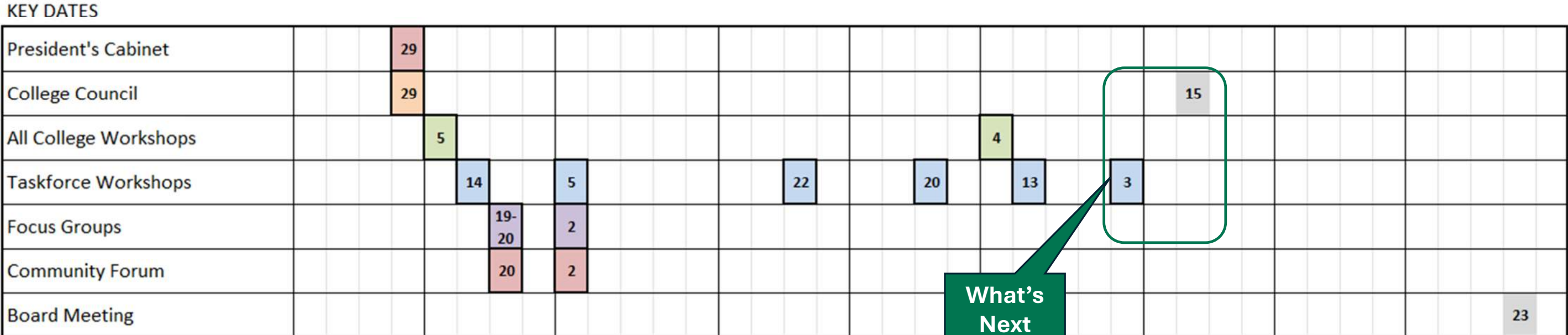
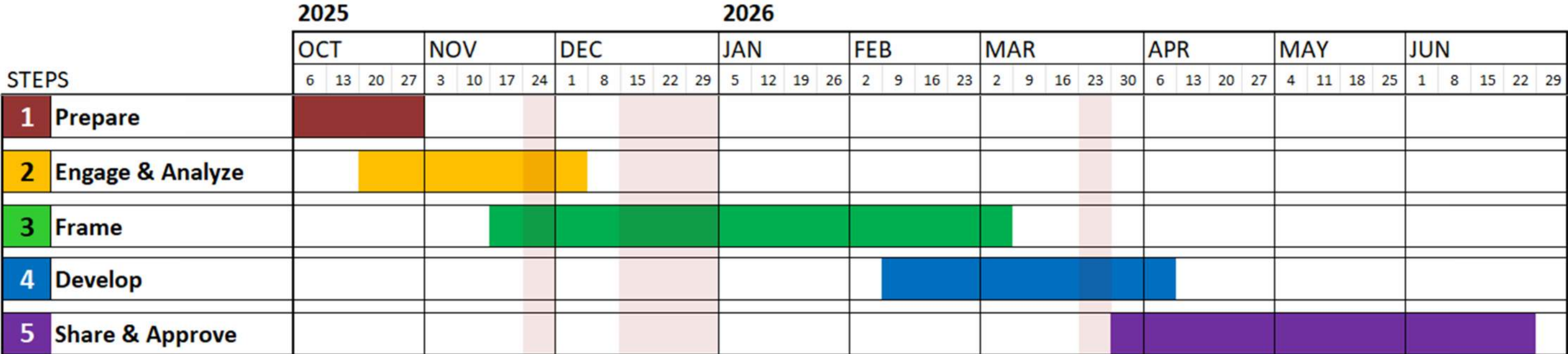
- **Early momentum** → Completion of transfer-level English and math in the first year
- **Support utilization** → Student engagement with support services
- **Persistence** → First-year persistence rates
- **Equity** → Reduction in completion equity gap across student population
- **Completion** → Total degrees and certificates awarded annually

# Next Steps



# Diablo Valley College

## PLANNING ROADMAP (TIMELINE)



**What's Next**

Callout box pointing to the date 3 in the Taskforce Workshops row of the Key Dates calendar.



# Diablo Valley College Educational Strategic Plan

---

ESP Taskforce Workshop #5  
*March 13, 2026*